

SCHEDULE OF OPENINGS

TYPE	SIZE	DESCRIPTION
DOORS		
D1	105 X 215	FRAME - R.C.C / M.S. COIL ROLLED STAINLESS STEEL. GLASS. PRE-PAVED PARTIAL. 1440 SINGLE SHUTTER
D2	90 X 215	FRAME - R.C.C / M.S. COIL ROLLED STAINLESS STEEL. GLASS. PRE-PAVED PARTIAL. 1440 SINGLE SHUTTER
D3	90 X 215	FRAME - R.C.C / M.S. COIL ROLLED STAINLESS STEEL. GLASS. PRE-PAVED PARTIAL. 1440 SINGLE SHUTTER
D4	150 X 215	M.S. GRILLE DOOR, AS PER DETAILS
D5	80 X 215	M.S. GRILLE DOOR, AS PER DETAILS
D6	375 X 60	M.S. PLATE SHUTTER, AS PER DETAILS
OPENINGS		
O	90 X 215	OPENING IN THE WALL
WINDOWS		
W1	135 X 120	FULLY GLAZED WINDOW OF M.S. Z SECTIONS FITTED IN ADDITIONAL OUTER M.S. FRAME - THREE SHUTTERS, AS PER DETAILS
W2	90 X 120	FULLY GLAZED WINDOW OF M.S. Z SECTIONS FITTED IN ADDITIONAL OUTER M.S. FRAME - DOUBLE SHUTTER, AS PER DETAILS
W3	50 X 90	FULLY GLAZED, M.S. STAFFED WINDOW (FOR W.C. & BATH) AS PER DETAILS
W4	90 X 50	FULLY GLAZED, M.S. STAFFED WINDOW (FOR KITCHEN & BED ROOM) AS PER DETAILS
CUPBOARDS		
C1	200 X 53 X 215	BUILT IN CUPBOARD WITH ONE SIDE OPENING. PRE-PAVED PARTIAL BOARD SHUTTERS & SHELVES AS PER DETAILS
C2	150 X 45 X 215	BUILT IN CUPBOARD WITH ONE SIDE OPENING. PRE-PAVED PARTIAL BOARD SHUTTERS & SHELVES AS PER DETAILS
C3	150 X 45 X 215	BUILT IN CUPBOARD WITH ONE SIDE OPENING. PRE-PAVED PARTIAL BOARD SHUTTERS & SHELVES AS PER DETAILS

CARPET AREA STATEMENT

ROOMS

LIVING	2.70 X 3.60	= 9.72 SQ. M.	= 9.72 SQ. M.
KITCHEN	2.55 X 2.85	= 7.27 SQ. M.	= 7.27 SQ. M.
BED RM	3.23 X 3.40	= 10.98 SQ. M.	
	- 0.53 X 2.50	= - 1.33 SQ. M.	
W.C.	1.20 X 0.95	= 1.14 SQ. M.	= 1.14 SQ. M.
BATH	1.20 X 1.90	= 2.28 SQ. M.	= 2.28 SQ. M.
PASSAGE	2.55 X 1.55	= 3.95 SQ. M.	= 3.95 SQ. M.
TOTAL			= 34.01 SQ. M.

CURBOUT AREA STATEMENT

KITCHEN	0.45 X 1.50	= 0.67 SQ. M.
BED RM	0.53 X 1.85	= 0.98 SQ. M.
LIVING	1.50 X 0.40	= 0.60 SQ. M.
TOTAL		= 2.25 SQ. M.

BALCONIES (for hot & dry climate)

LIVING	1.17 X 1.20	= 1.40 SQ. M.
BED RM	1.10 X 2.36	= 2.60 SQ. M.
TOTAL		= 4.00 SQ. M.

BUILT-UP AREA CALCULATIONS

1. G A = 2103 X 1389 = 29211 SQ. M.

DEDUCTIONS :

B	8.25 X 3.00	= 24.75 SQ. M.
C	2.55 X 2.25	= 5.74 SQ. M.
D	3.38 X 3.87 X 2	= 26.16 SQ. M.
E	1.35 X 1.67 X 2	= 4.51 SQ. M.
F	2.93 X 1.15 X 4	= 13.48 SQ. M.
G	2.62 X 3.00 X 2	= 15.72 SQ. M.
H	3.01 X 0.97	= 2.92 SQ. M.
TOTAL DEDUCTIONS		= 93.28 SQ. M.

NET B.U. AREA (G-D) = 28283 SQ. M.

METER RM = 3.01 X 1.73 = 5.21 SQ. M.

BALCONIES :

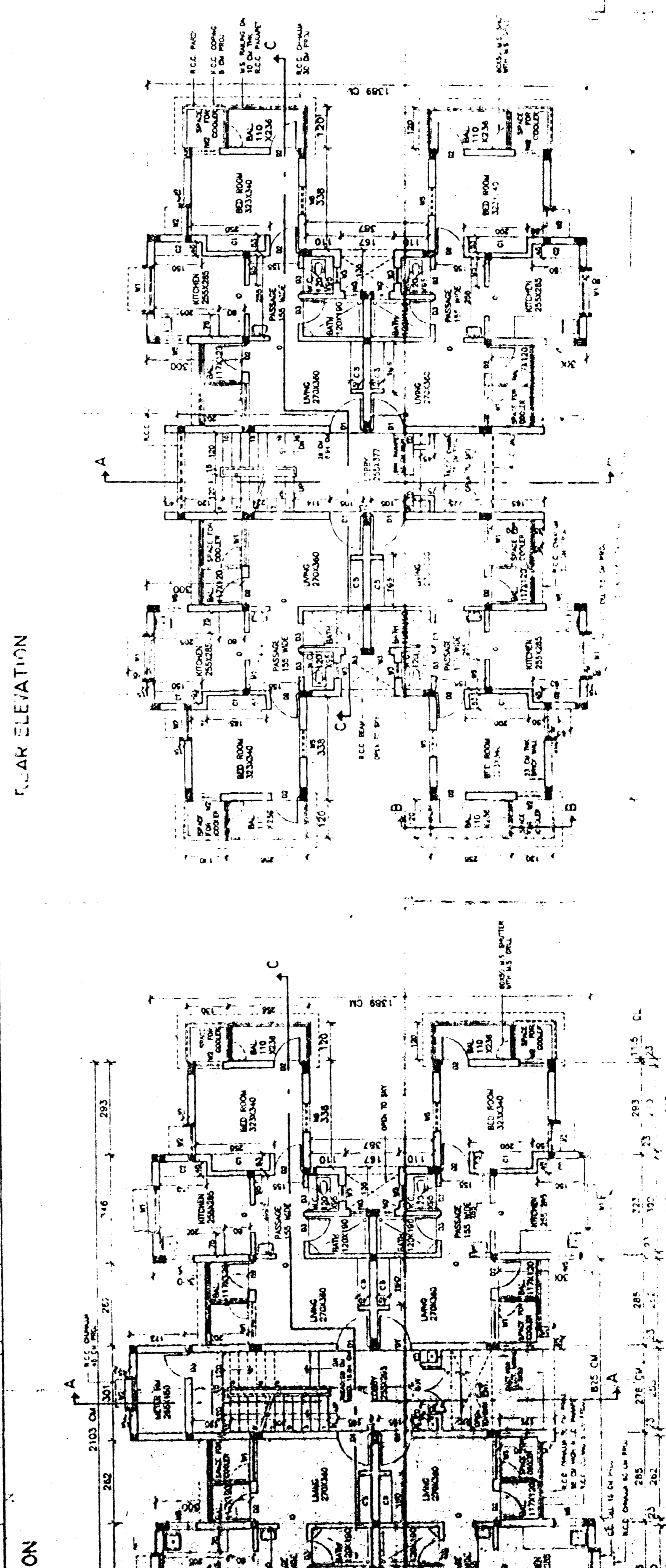
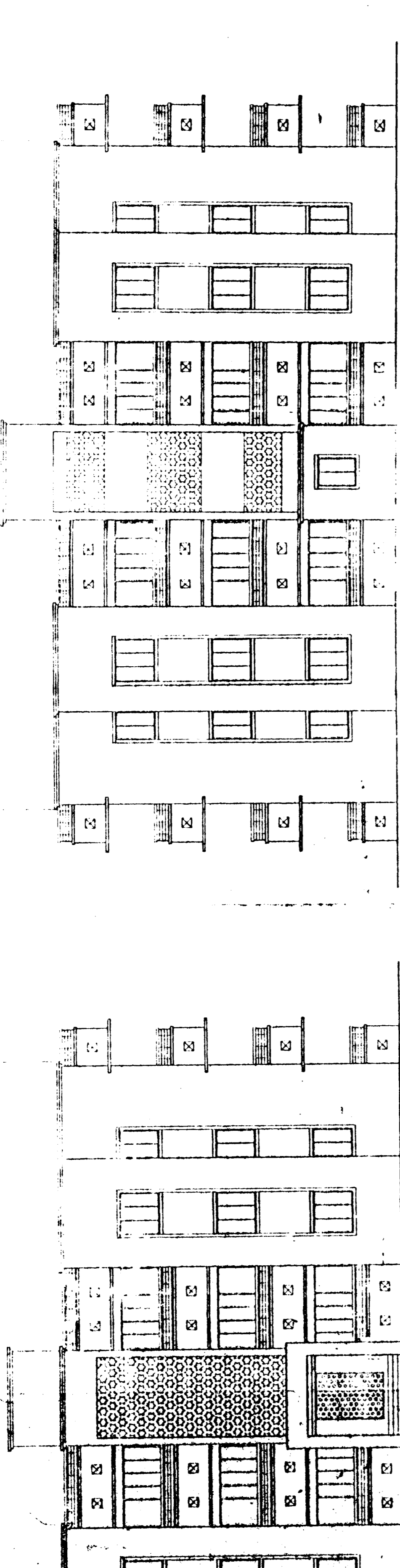
LIVING	1.27 X 1.30 X 4	= 6.60 SQ. M.
BED RM	1.20 X 2.56 X 4	= 12.29 SQ. M.
TOTAL (PER FLOOR)		= 18.89 SQ. M.

TOTAL BUILT-UP AREA ON GROUND FLOOR (INCLUDING METER RM & BALCONY) (1+2+3) = 22283 SQ. M.

FLOOR AREA STATEMENT

(EXCLUDING METER RM & BALCONIES ON UPPER FLOORS)

AREA ON GROUND FLOOR	= 21772 SQ. M.
AREA ON 1ST FLOOR	= 19083 SQ. M.
AREA ON 2ND FLOOR	= 19083 SQ. M.
TOTAL FLOOR AREA	= 61138 SQ. M.



FRONT ELEVATION

GROUND FLOOR PLAN
SCALE: 1:100

TYPICAL FLOOR PLAN
SCALE: 1:100

WORKING DRAWINGS

DESIGNED BY: **DEPUTY CHIEF ARCHITECT, NAGPUR (P.W.) REGION, N A G P U R.**

CHECKED BY: **S. S. MOHANTY, DEPUTY CHIEF ARCHITECT**

DATE: **15/01/2005**

SCALE: **1:100**

JOB NO: **T-DAN/RES-18**

DRG NO: **1**